

# Stormwater Management Plan summary



<b>SMP Title</b>	Wesley College Paerata North Stormwater Management Plan
<b>SMP Date</b>	October 2016
<b>SMP Version</b>	Version G
<b>SMP prepared by</b>	Woods
<b>Location</b>	Paerata
<b>Consolidated Receiving Environment</b>	Manukau Harbour
<b>Stormwater Catchment</b>	Whangapouri Creek
<b>Brownfield / Greenfield</b>	Greenfield
<b>SMP Purpose</b>	Plan Change/Subdivision
<b>Unitary Plan Precinct</b>	Chapter I, 6.30 Franklin 2
<b>Legacy NDC</b>	REG-2016-3786
<b>Date SMP Adopted</b>	5 October 2019 (Legacy NDC granted date)
<b>HW Reference</b>	2022-011

## Stormwater management requirements

Stormwater management catchment	Proposed land use	Receiving environment	Water quality management	Hydrology mitigation (retention)	Hydrology mitigation (detention)	Flood management	Outlet design	Assets to be vested with council	General comments
SWZ A	Residential - Mixed Housing Urban Zone Business – Local Centre Zone	Whangapouri Creek	Water quality treatment via at source retention and detention devices Inert building materials (roofing and cladding)	Retention at source (5mm), including water reuse for residential sites	Detention at source	Nil	Alternative green outfall design, e.g. shallow planted open drains or wai ora filters. Proposal part of master planning for the precinct	<ul style="list-style-type: none"> <li>Road reserve devices</li> <li>Reticulation and outfalls</li> </ul>	
SWZ B	Residential - Mixed Housing Urban Zone	Whangapouri Creek	Water quality treatment via at source retention and detention devices Inert building materials (roofing and cladding)	Retention at source (5mm)	Detention in constructed wetlands or at source	Nil		<ul style="list-style-type: none"> <li>Road reserve devices</li> <li>Reticulation and outfalls</li> <li>Wetland(s)</li> </ul>	
SWZ C	Residential - Mixed Housing Urban Zone	Whangapouri Creek	Water quality treatment via at source retention and detention devices Inert building materials (roofing and cladding)	Retention at source (5mm)	Detention at source	Nil		<ul style="list-style-type: none"> <li>Road reserve devices</li> <li>Reticulation and outfalls</li> </ul>	

## Wesley/Paerata North Stormwater Management Plan Summary

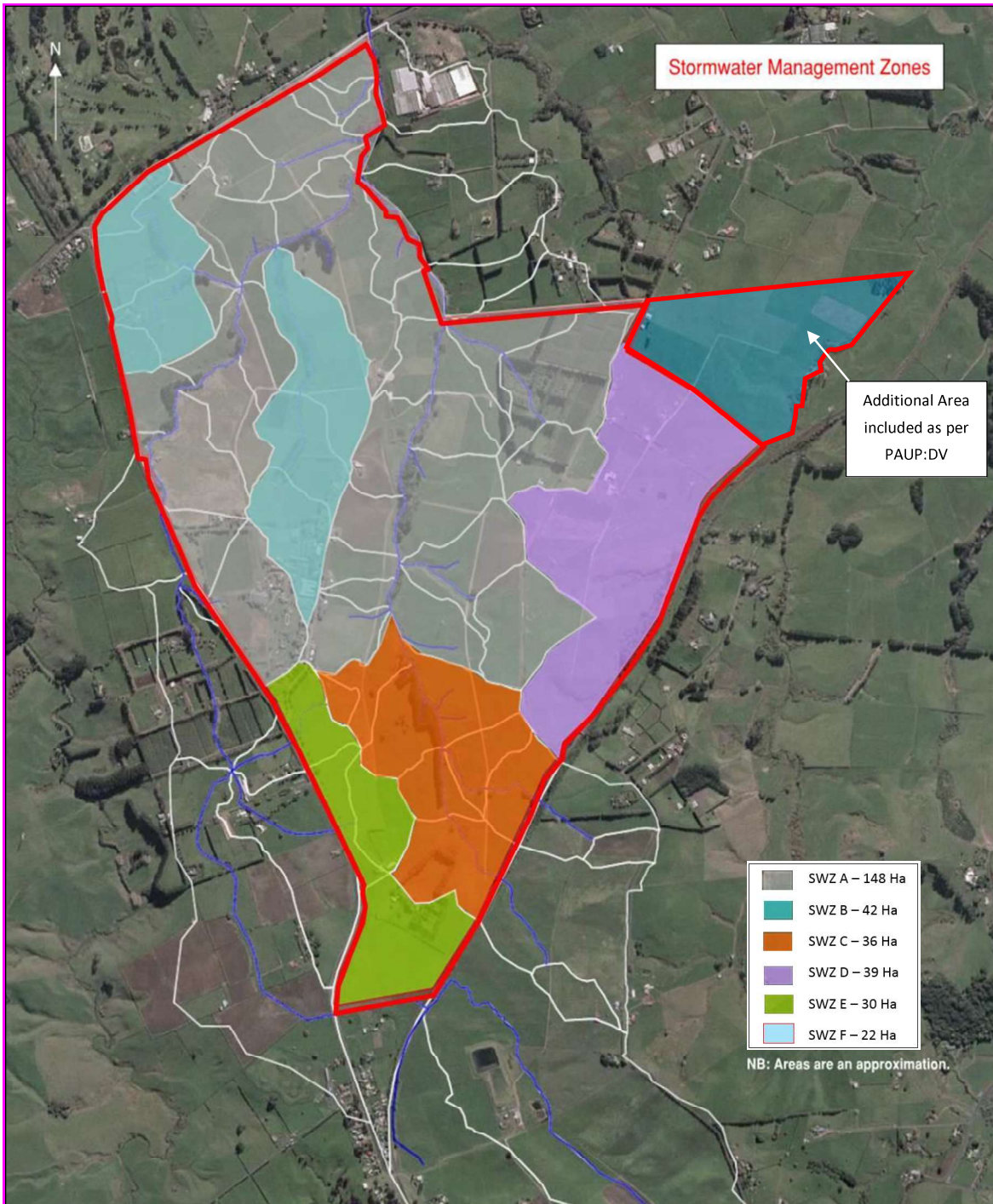
Stormwater management catchment	Proposed land use	Receiving environment	Water quality management	Hydrology mitigation (retention)	Hydrology mitigation (detention)	Flood management	Outlet design	Assets to be vested with council	General comments
SWZ D	Residential - Mixed Housing Urban Zone	Whangapouri Creek	Water quality treatment via at source retention and detention devices Inert building materials (roofing and cladding)	Retention at source (5mm)	Detention in constructed wetlands or at source	1% and 10% AEP attenuation in wetland(s)		<ul style="list-style-type: none"> <li>• Road reserve devices</li> <li>• Reticulation and outfalls</li> <li>• Wetland(s)</li> </ul>	
SWZ E	Residential - Mixed Housing Urban Zone	Whangapouri Creek	Water quality treatment via at source retention and detention devices Inert building materials (roofing and cladding)	Retention at source (5mm), including water reuse for residential sites	Retention and Detention in constructed wetlands or at source	1% and 10% AEP attenuation in wetland(s)		<ul style="list-style-type: none"> <li>• Road reserve devices</li> <li>• Reticulation and outfalls</li> <li>• Wetland(s)</li> </ul>	
SWZ F	Residential - Mixed Housing Urban Zone	Whangapouri Creek	TBC	TBC	TBC	TBC	Stormwater code of practice	TBC	Catchment SWZ-F not assessed in SMP. Analysis to be completed prior to development.

### Notes:

This document is prepared to provide the user with a summary of the stormwater management requirements within the adopted Stormwater Management Plan. To see the full Stormwater Management Plan please contact [HWDevelopment@aucklandcouncil.govt.nz](mailto:HWDevelopment@aucklandcouncil.govt.nz)

### Catchment map

Next page



Stormwater Management Zones

