

Stormwater Management Plan summary



SMP Title	Clarks Beach Special Housing Area Stormwater Management Plan
SMP Date	August 2016
SMP Version	v3
SMP prepared by	Civil Plan Consultants
Location	Clarks Beach
Consolidated Receiving Environment	Manukau Harbour
Stormwater Catchment	Clarks Beach
Brownfield / Greenfield	Greenfield
SMP Purpose	Plan Change/Subdivision
Unitary Plan Precinct	I450 Clarks Beach
Legacy NDC	
Date SMP Adopted	15 September 2020
HW Reference	NDC-2020-047

Stormwater management requirements

Stormwater management catchment	Proposed land use	Receiving environment	Water quality management	Hydrology mitigation (retention)	Hydrology mitigation (detention)	Flood management	Outlet design	Assets to be vested with council	General comments
Catchment 1 (C1)	<ul style="list-style-type: none"> Residential - Mixed Housing Suburban Zone Business - Neighbourhood Centre Zone Open Space - Informal Recreation Zone 	Coast	Reduced water quality treatment at source (10mm runoff event) for all roads and JOALs	Not required	Not required	Nil	Stormwater Code of Practice	<ul style="list-style-type: none"> Stormwater reticulation and outfalls Road reserve treatment devices 	
Catchment 2 (C2)	<ul style="list-style-type: none"> Residential - Mixed Housing Suburban Zone Business - Neighbourhood Centre Zone Open Space - Informal Recreation Zone 	Stream (unnamed) AUP stream number 437510	Water quality treatment via at source retention and detention devices	Retention at source (5mm)	Detention of 16.3mm (21.3mm – 5mm retention) at source	Attenuation basin up to the 1% AEP rainfall event*	Stormwater Code of Practice	<ul style="list-style-type: none"> Stormwater reticulation and outfalls Road reserve treatment devices Attenuation basins 	

Clarks Beach Stormwater Management Plan Summary

Stormwater management catchment	Proposed land use	Receiving environment	Water quality management	Hydrology mitigation (retention)	Hydrology mitigation (detention)	Flood management	Outlet design	Assets to be vested with council	General comments
Catchment 3 (C3)	<ul style="list-style-type: none"> Residential - Mixed Housing Suburban Zone 	Stream (unnamed), AUP stream number 437470	Water quality treatment via at source retention and detention devices	Retention at source (5mm)	Detention of 16.3mm (21.3mm – 5mm retention) at source	Attenuation basin up to the 1% AEP rainfall event*	Stormwater Code of Practice	<ul style="list-style-type: none"> Stormwater reticulation and outfalls Road reserve treatment devices Attenuation basins 	

Notes:

This SMP was prepared to support the Clarks Beach Special Housing Area (SHA) application in 2017. The Clarks Beach SHA became the Clarks Beach Precinct (I450) in the AUP. NDC DIS60083943 was granted by Auckland Council in August 2017.

SMP text in relation to C2 and C3 attenuation devices includes the following commentary:

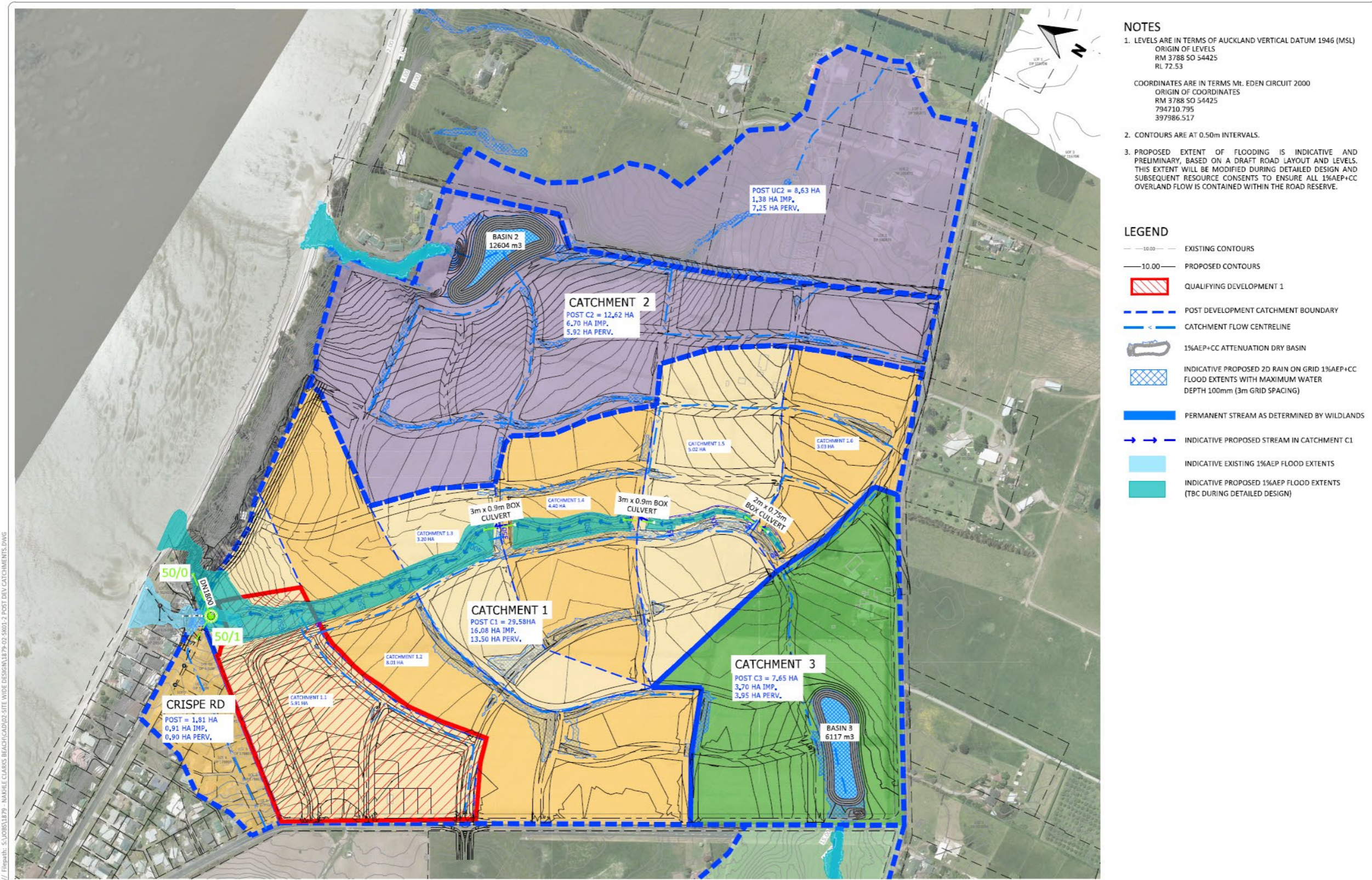
**If further modelling at subdivision stage proves that the downstream network could accommodate additional flows, the size or necessity for a basin (or similar type device(s)) to mitigate pre-development flows can be revisited.*

Water quality for the stream catchments C2 and C3 shall be met through the provision of the hydrology management requirements which provide a suitable level of quality treatment.

This document is prepared to provide the user with a summary of the stormwater management requirements within the adopted Stormwater Management Plan. To see the full Stormwater Management Plan please contact HWDevelopment@aucklandcouncil.govt.nz

Clarks Beach Stormwater Management Plan Summary

Catchment map



Project: 1879-02-SK01-2 / Filepaths: S:\01879-02-SK01-2\POST DEVY CATCHMENTS.DWG
 1879-02-SK01-2 / Filepaths: S:\01879-02-SK01-2\POST DEVY CATCHMENTS.DWG

REV	ISSUED FOR CONSENT	BY	DATE
C1	ISSUED FOR CONSENT	GDS	09.08.16
REV	REVISION DETAILS		

DRAWN	DATE
RJP	06.2016
CHECKED	DATE
RJP	15.06.16
APPROVED	DATE
MSS	15.06.16

THIS DRAWING (AND DESIGN) REMAINS THE PROPERTY OF CIVILPLAN CONSULTANTS LIMITED AND MAY NOT BE REPRODUCED OR ALTERED WITHOUT PRIOR AGREEMENT FROM CIVILPLAN CONSULTANTS LIMITED. CIVILPLAN CONSULTANTS LIMITED WILL NOT ACCEPT LIABILITY ARISING FROM UNAUTHORISED USE OF THIS DRAWING.

CIVILPLAN CONSULTANTS
 Level 3, 3 Osterley Way, Manukau, Auckland. Phone: 09 222 2445

PROJECT TITLE: KNIGHT INVESTMENTS LTD
 137 CLARKS BEACH ROAD (PV)
 CLARKS BEACH

SHEET TITLE: STORMWATER MANAGEMENT
 POST DEVELOPMENT CATCHMENTS
 AND PROPOSED MITIGATION

ISSUE STATUS: **CONSENT ISSUE**
 SCALE: 1:2000 / 1:4000
 SCALE BAR: 0 40 80 120 160 200m
 DRAWING NUMBER: 1879-02-SK01-2 REV: C1
 Rev: (NO REV.=DRAFT) (D=DESIGN) (C=CONSENT) (B=BUILT) (A=AS-BUILT / FINAL ISSUE)